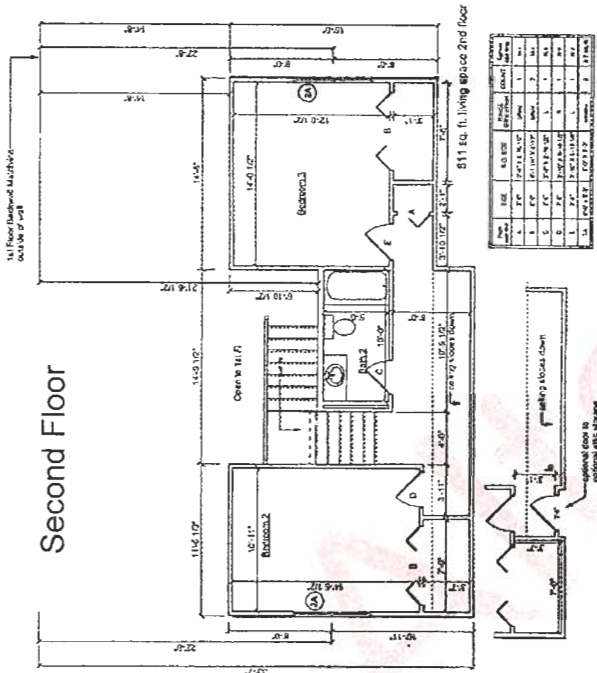
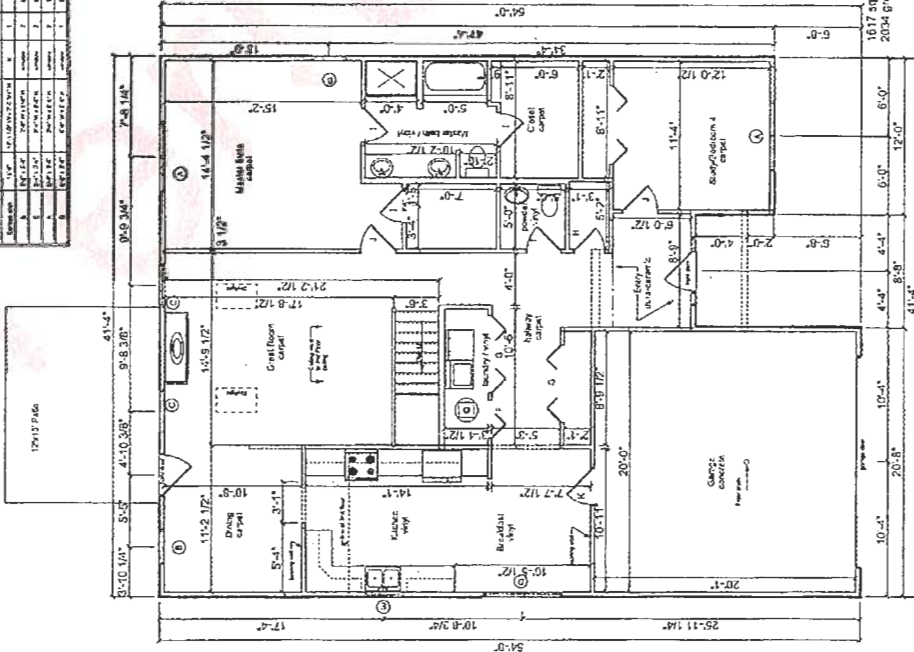


Meadowgrove

NOTICE: For all purposes see to base all drawings
 All interior dimensions are to face of wall
 All exterior dimensions are to face of wall
 All dimensions shall comply with the International Building Code
 All work shall be in accordance with the approved plans
 All work shall be in accordance with the approved specifications
 All work shall be in accordance with the approved schedule of work
 All work shall be in accordance with the approved contract documents
 All work shall be in accordance with the approved conditions of contract
 All work shall be in accordance with the approved general conditions
 All work shall be in accordance with the approved special conditions
 All work shall be in accordance with the approved addenda
 All work shall be in accordance with the approved amendments
 All work shall be in accordance with the approved change orders
 All work shall be in accordance with the approved requests for information
 All work shall be in accordance with the approved requests for proposals
 All work shall be in accordance with the approved requests for quotations
 All work shall be in accordance with the approved requests for information

Room No.	Room Name	Area (sq. ft.)	Volume (cu. ft.)	Notes
1	Living Room	1677.50	100650.00	
2	Dining Room	1152.12	69127.36	
3	Kitchen	1055.12	63307.36	
4	Bathroom	511.12	30667.36	
5	Bedroom	1200.12	72007.36	
6	Bedroom	1000.12	60007.36	
7	Bedroom	1000.12	60007.36	
8	Bedroom	1000.12	60007.36	
9	Bedroom	1000.12	60007.36	
10	Bedroom	1000.12	60007.36	
11	Bedroom	1000.12	60007.36	
12	Bedroom	1000.12	60007.36	
13	Bedroom	1000.12	60007.36	
14	Bedroom	1000.12	60007.36	
15	Bedroom	1000.12	60007.36	
16	Bedroom	1000.12	60007.36	
17	Bedroom	1000.12	60007.36	
18	Bedroom	1000.12	60007.36	
19	Bedroom	1000.12	60007.36	
20	Bedroom	1000.12	60007.36	
21	Bedroom	1000.12	60007.36	
22	Bedroom	1000.12	60007.36	
23	Bedroom	1000.12	60007.36	
24	Bedroom	1000.12	60007.36	
25	Bedroom	1000.12	60007.36	
26	Bedroom	1000.12	60007.36	
27	Bedroom	1000.12	60007.36	
28	Bedroom	1000.12	60007.36	
29	Bedroom	1000.12	60007.36	
30	Bedroom	1000.12	60007.36	
31	Bedroom	1000.12	60007.36	
32	Bedroom	1000.12	60007.36	
33	Bedroom	1000.12	60007.36	
34	Bedroom	1000.12	60007.36	
35	Bedroom	1000.12	60007.36	
36	Bedroom	1000.12	60007.36	
37	Bedroom	1000.12	60007.36	
38	Bedroom	1000.12	60007.36	
39	Bedroom	1000.12	60007.36	
40	Bedroom	1000.12	60007.36	
41	Bedroom	1000.12	60007.36	
42	Bedroom	1000.12	60007.36	
43	Bedroom	1000.12	60007.36	
44	Bedroom	1000.12	60007.36	
45	Bedroom	1000.12	60007.36	
46	Bedroom	1000.12	60007.36	
47	Bedroom	1000.12	60007.36	
48	Bedroom	1000.12	60007.36	
49	Bedroom	1000.12	60007.36	
50	Bedroom	1000.12	60007.36	
51	Bedroom	1000.12	60007.36	
52	Bedroom	1000.12	60007.36	
53	Bedroom	1000.12	60007.36	
54	Bedroom	1000.12	60007.36	
55	Bedroom	1000.12	60007.36	
56	Bedroom	1000.12	60007.36	
57	Bedroom	1000.12	60007.36	
58	Bedroom	1000.12	60007.36	
59	Bedroom	1000.12	60007.36	
60	Bedroom	1000.12	60007.36	
61	Bedroom	1000.12	60007.36	
62	Bedroom	1000.12	60007.36	
63	Bedroom	1000.12	60007.36	
64	Bedroom	1000.12	60007.36	
65	Bedroom	1000.12	60007.36	
66	Bedroom	1000.12	60007.36	
67	Bedroom	1000.12	60007.36	
68	Bedroom	1000.12	60007.36	
69	Bedroom	1000.12	60007.36	
70	Bedroom	1000.12	60007.36	
71	Bedroom	1000.12	60007.36	
72	Bedroom	1000.12	60007.36	
73	Bedroom	1000.12	60007.36	
74	Bedroom	1000.12	60007.36	
75	Bedroom	1000.12	60007.36	
76	Bedroom	1000.12	60007.36	
77	Bedroom	1000.12	60007.36	
78	Bedroom	1000.12	60007.36	
79	Bedroom	1000.12	60007.36	
80	Bedroom	1000.12	60007.36	
81	Bedroom	1000.12	60007.36	
82	Bedroom	1000.12	60007.36	
83	Bedroom	1000.12	60007.36	
84	Bedroom	1000.12	60007.36	
85	Bedroom	1000.12	60007.36	
86	Bedroom	1000.12	60007.36	
87	Bedroom	1000.12	60007.36	
88	Bedroom	1000.12	60007.36	
89	Bedroom	1000.12	60007.36	
90	Bedroom	1000.12	60007.36	
91	Bedroom	1000.12	60007.36	
92	Bedroom	1000.12	60007.36	
93	Bedroom	1000.12	60007.36	
94	Bedroom	1000.12	60007.36	
95	Bedroom	1000.12	60007.36	
96	Bedroom	1000.12	60007.36	
97	Bedroom	1000.12	60007.36	
98	Bedroom	1000.12	60007.36	
99	Bedroom	1000.12	60007.36	
100	Bedroom	1000.12	60007.36	

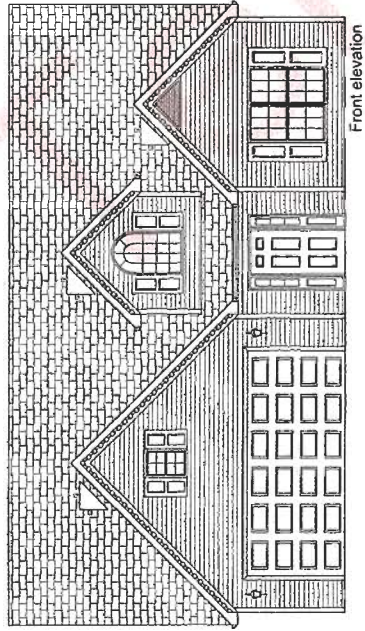


Heated - 2228 sq. ft.
 Gross - 2645 sq. ft.

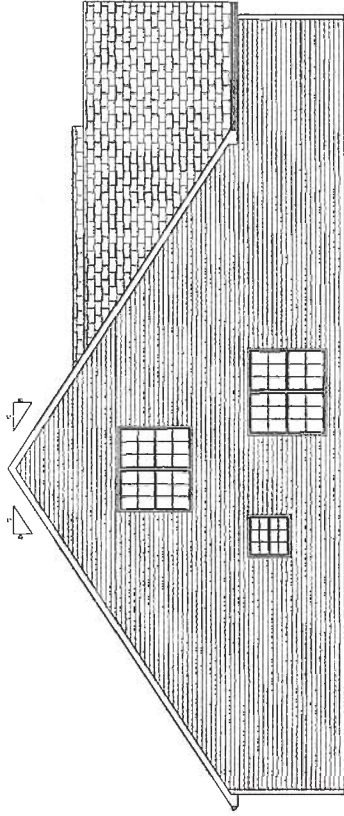
TERRA ALTA - MEADOWGROVE

DATE: FEBRUARY 27, 2023
 SCALE: 1/4" = 1'-0"
 DRAWN BY: N.
 CHECKED BY: N.
 PROJECT: MEADOWGROVE
 DRAWING NUMBER: 2023-02

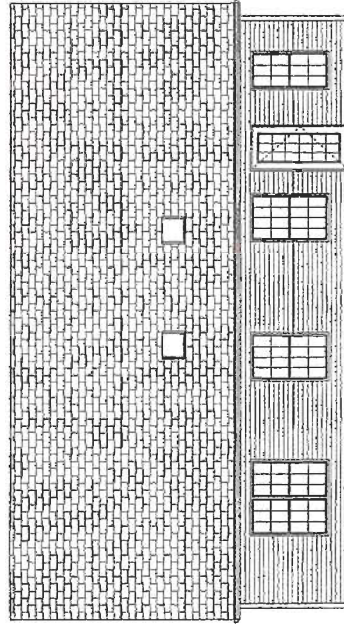
Room	Area (sq. ft.)	Volume (cu. ft.)	Notes
1	1677.50	100650.00	
2	1152.12	69127.36	
3	1055.12	63307.36	
4	1000.12	60007.36	
5	1000.12	60007.36	
6	1000.12	60007.36	
7	1000.12	60007.36	
8	1000.12	60007.36	
9	1000.12	60007.36	
10	1000.12	60007.36	
11	1000.12	60007.36	
12	1000.12	60007.36	
13	1000.12	60007.36	
14	1000.12	60007.36	
15	1000.12	60007.36	
16	1000.12	60007.36	
17	1000.12	60007.36	
18	1000.12	60007.36	
19	1000.12	60007.36	
20	1000.12	60007.36	
21	1000.12	60007.36	
22	1000.12	60007.36	
23	1000.12	60007.36	
24	1000.12	60007.36	
25	1000.12	60007.36	
26	1000.12	60007.36	
27	1000.12	60007.36	
28	1000.12	60007.36	
29	1000.12	60007.36	
30	1000.12	60007.36	
31	1000.12	60007.36	
32	1000.12	60007.36	
33	1000.12	60007.36	
34	1000.12	60007.36	
35	1000.12	60007.36	
36	1000.12	60007.36	
37	1000.12	60007.36	
38	1000.12	60007.36	
39	1000.12	60007.36	
40	1000.12	60007.36	
41	1000.12	60007.36	
42	1000.12	60007.36	
43	1000.12	60007.36	
44	1000.12	60007.36	
45	1000.12	60007.36	
46	1000.12	60007.36	
47	1000.12	60007.36	
48	1000.12	60007.36	
49	1000.12	60007.36	
50	1000.12	60007.36	
51	1000.12	60007.36	
52	1000.12	60007.36	
53	1000.12	60007.36	
54	1000.12	60007.36	
55	1000.12	60007.36	
56	1000.12	60007.36	
57	1000.12	60007.36	
58	1000.12	60007.36	
59	1000.12	60007.36	
60	1000.12	60007.36	
61	1000.12	60007.36	
62	1000.12	60007.36	
63	1000.12	60007.36	
64	1000.12	60007.36	
65	1000.12	60007.36	
66	1000.12	60007.36	
67	1000.12	60007.36	
68	1000.12	60007.36	
69	1000.12	60007.36	
70	1000.12	60007.36	
71	1000.12	60007.36	
72	1000.12	60007.36	
73	1000.12	60007.36	
74	1000.12	60007.36	
75	1000.12	60007.36	
76	1000.12	60007.36	
77	1000.12	60007.36	
78	1000.12	60007.36	
79	1000.12	60007.36	
80	1000.12	60007.36	
81	1000.12	60007.36	
82	1000.12	60007.36	
83	1000.12	60007.36	
84	1000.12	60007.36	
85	1000.12	60007.36	
86	1000.12	60007.36	
87	1000.12	60007.36	
88	1000.12	60007.36	
89	1000.12	60007.36	
90	1000.12	60007.36	
91	1000.12	60007.36	
92	1000.12	60007.36	
93	1000.12	60007.36	
94	1000.12	60007.36	
95	1000.12	60007.36	
96	1000.12	60007.36	
97	1000.12	60007.36	
98	1000.12	60007.36	
99	1000.12	60007.36	
100	1000.12	60007.36	



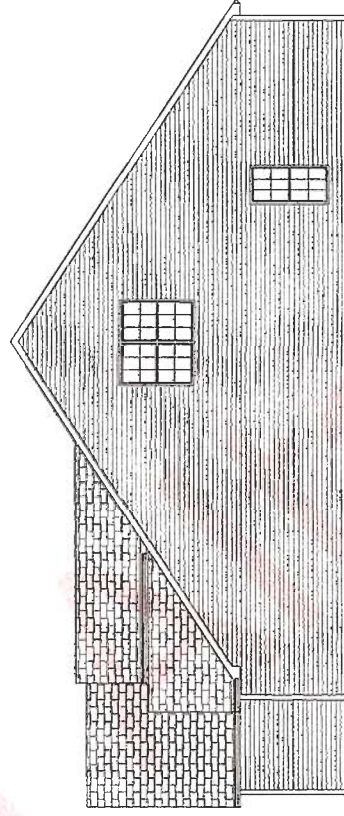
Front elevation



LEFT ELEVATION



REAR ELEVATION



RIGHT ELEVATION

TERRA ALTA - MEADOWGROVE

DATE February 27, 2025	SCALE: 1/4" = 1'	DRAWN BY: JN
PROJECT: Terra Alta - Meadowgrove	ELEVATIONS	REVISIONS
1300 Diamond Rd		
Geese City, PA 16127		
Phone: 724-436-6114	DRAWING NUMBER	REVISIONS
Fax: 724-436-6114	1 of 5	